





# KMWA AGM 2023

- 1) TILAWAT
- 2) APOLOGIES FOR ABSENCE
- 3) MINUTES OF LAST MEETING
- 4) CHAIRMAN AND GENERAL SECRETARY'S REPORT INCORPORATING COORDINATORS REPORTS.
- 5) TREASURER'S REPORT
- 6) APPOINTMENT OF AUDITORS
- 7) ELECTION COMMISSIONERS REPORT
- 8) ANY OTHER BUSINESS & QUESTIONS FROM THE FLOOR
- 9) RESOLUTIONS



**KENT MUSLIM WELFARE  
ASSOCIATION LTD**  
**AGM 2023: 14<sup>th</sup> MAY**  
**CHAIRMAN & GENERAL  
SECRETARY'S REPORT**

114 Canterbury Street,  
Gillingham, Kent, ME7 5UH  
Charity No. 1117731  
Web: [www.kmwa.org.uk](http://www.kmwa.org.uk)  
Tel/Fax: 01634 850878



What are we  
trying to do?

GENEROI  
GIVING  
AWARENESS  
SERVICES  
ASSISTA  
MORAL  
CARE  
AID  
MISSIO  
HELPING  
RESPECT  
TOGETHERNESS  
CHARITY  
LIFE  
VOLUNTEER  
TIME  
ALTRUISTIC  
COMMUNITY  
DONATIONS  
CONTRIBUTION  
RESCUE  
PORT  
PE  
TEAMWORK  
ASSISTED  
PERSON



# What is our purpose?

The day to day running of the Masjid.

Appointing and managing staff. It is our responsibility to be fair and to uphold the conduct and behaviour which is expected and not to engage in activity which places the Organisation into dis

Ensure the performance of 5 daily Salaat in congregation and strive towards increasing the number of Muslims in congregation.

# What is Our Purpose?

Give priority to the maintenance of the Masjid building as well as its associated facilities.

Ensure the Masjid is clean and safe with adequate Wudu facilities.

Safeguard the income and property of the Masjid, meeting the necessary expenses and avoiding unnecessary expenditure.

Keep proper records of income and expenditure.

# What is Our purpose?

- To advance the education of the community, especially the children and youth
- To provide facilities and activities in the interests of social welfare, community engagement, and community development and education.
- To liaise with non-Muslims to promote and propagate the Islamic faith and to provide a role model for the community.
- To promote charitable activity in our sphere of influence for the benefit of our neighbours and the community at large.



# Salaat – ul - Jummah

- 2 Jammaat - currently 1.30pm and 2.15pm
- 12.30pm and 1.15pm in Winter.
- We have to find Imams to cover.

# SALAAT UL EID

- 5 Jammaat
- 7am, 8am, 9am,  
10am, 11am.







# KMWA MADRASSA

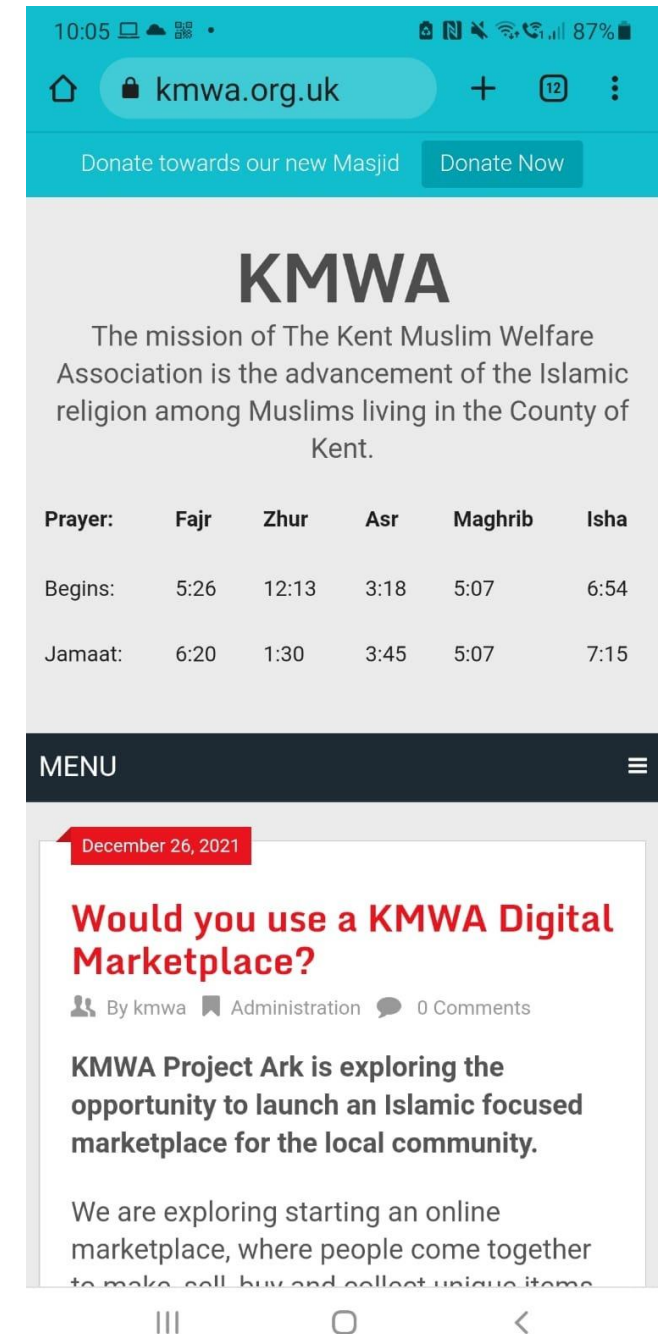
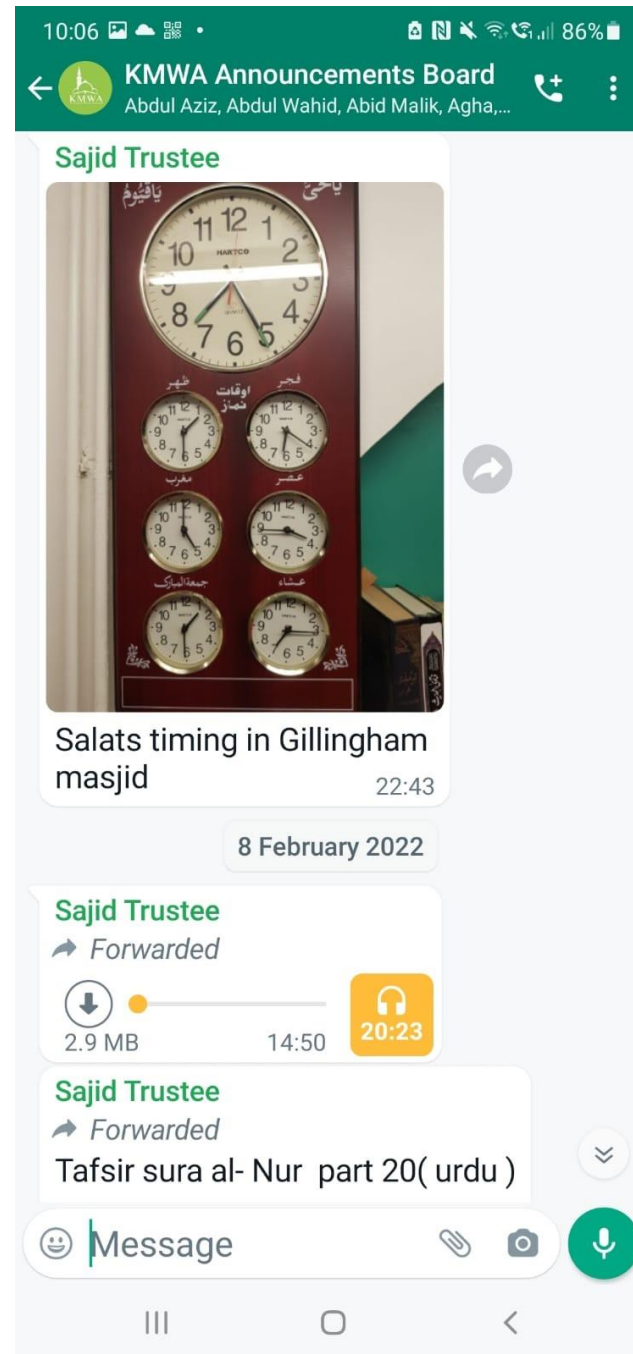
Run by: Imams Zahoor, Irfan and Assad & Sister Uzmah

Saturday/ Sunday: 11.00am – 1pm.

Tues, Wed, Thurs: 6.00pm -7pm.

Reading Quran, Tajweed,  
Performing Salaat, Basic Seerah  
and Fiqh







## IPAG



Ajaib Hussain and Rizwana Shelley are members of the IPAG (Independent Police Advisory Group) representing KMWA and working closely together for community cohesion with the local Police.

On Tuesday 9th November 2021, Kent Chief Constable Alan Pughsley shared the plans of Kent Police to tackle "violence against women and girls"

The plans are wide ranging and very informative with a lot of good work already being done in this regard

The Chief Constable was made aware of the unacceptable rise in Islamophobic and other hate crime. A lot is done already but a lot more can be done which was acknowledged by the chief inspector; especially on increasing the victim satisfaction levels of hate crime which were 82.2% for various reasons he explained.

## IPAG

a-hussain@gmx.de  
07824445346  
Or  
Rizwana Shelley  
rizwanashelley@gmail.com  
07857 196560

# KMWA ACTIVITIES

We have a number of activities available at the mosque, please get involved.

## ADULT & YOUTH TAJWEED



KMWA have been pleased to be running Quran tajweed courses at Gillingham Masjid.

Classes are currently running on Monday and Tuesday evenings in the Masjid.

The course lasts for 6 weeks and is after Isha Prayer between 7pm (at Salaat-ul-Isha) for 1 hour until about 8.15pm.

The classes are taught by Maulana Irfan. It is expected that participants will already be familiar with reading Arabic. We can cater for a maximum of 10 people per course.

Course packs or books are provided on starting the course.

The cost of the entire 6 weeks is £30.

After the current courses finish, we will offer new 6 week courses and we hope that these will become regular courses which we offer. If you would like to sign up for a future course or have any questions, please contact Br Azeem.

## SISTERS' TAJWEED CLASS

We are also hoping to start a sisters' Tajweed class on Sunday afternoons.

If you have any ideas or educational programmes and courses which you would like to see offered then please let us know.

Br Azeem Nader via WhatsApp/text message only on 07739008000.

# INTERFAITH

## INTERFAITH WEEK 14-23 NOV

KMWA participated in the event organised by MIFA (Medway Interfaith Action [www.medwayinterfaith.org.uk](http://www.medwayinterfaith.org.uk)) to promote Islamic values and bring harmony and understanding in the community.

Ajaib Hussain from KMWA is currently the Chairman of MIFA and can be reached for any further information on this or if you would like to be involved next year.

The full program for the week was done via Zoom and the participation was very good with a daily average of 15-20 people in attendance. An excellent delivery of the topics by the speakers and a healthy questions and an-

swer sessions followed.

### The Hereafter

Shiekh Abdur Rehman representing KMWA, an Imam at HMPS, put a great Islamic perspective on the transition to the hereafter after death and the journey of the soul. As everyone has been touched or impacted by COVID-19 this was a great reminder and education for every one of the Muslim beliefs

### MIFA

[www.medwayinterfaith.org.uk](http://www.medwayinterfaith.org.uk)  
[ajaib@medwayinterfaith.org.uk](mailto:ajaib@medwayinterfaith.org.uk)  
07824445346

## AGENDA FOR THE INTERFAITH MEETING HELD IN NOV

Medway Inter Faith Action (MIFA)	One Planet, One People, One Future
Kent Muslim Welfare Association (KMWA)	Transition into Hereafter Speaker - Sheikh Abdur Rehman
Medway Baha'i Community	Abdu'l-Bahá, Champion of universal Peace Presented by Luz Moshtael and Hugh Hawkins
Medway Ahmadiyya Muslims	Climate Change
Medway Sikh Community	COP26 Better Late Than Never Presented by Dr Kulwant Jhita Sing
Chatham Memorial Synagogue	Friday Evening Service Live broadcast from Chatham Memorial Synagogue
MIFA (TBC)	An Open Discussion Evening (An opportunity for everyone to share stories and take part and discuss how we can further strengthen the bond between people of all faiths and none)
St Margaret's Church Rainham	Faith and Environment Rev Nathan Ward, Kayleigh Ward and Liz O'Hanlon

## FOOD VOLUNTEERS

KMWA and Magdalene Ministry Church in Chatham have been working together for over a year to take leftover or perishable food from the Co-ops in Gillingham, Strood, Rochester, Chatham, and Sittingbourne to shelter homeless and homeless needy people in the Medway Towns.

Sister Dr Rizwana Shelly has been the main coordinator, organiser, and driver from the KMWA side and Councillor Lady Lola from the Magdalene Ministry side.

This is a wonderful and very rewarding collaboration between the Masjid, Church and Co-Ops. It shows how; when the community pulls together, great things can be achieved, not just to feed the needy but in many other important projects too.

Every week a rota is put together by sister Rizwana and volunteers from the community from all walks of life pick up the bags of food from the various participating Co-Ops in Medway and deliver the food to the allocated drop-off points.

### Come and Help

May Allah (swt) reward all the volunteers and their families for doing this noble work. There are over 60 Volunteers in the WhatsApp group. If anyone is interested to participate, please contact sister Rizwana.

Rizwana Shelley  
[rizwanashelley@gmail.com](mailto:rizwanashelley@gmail.com)  
07857 196560



An example of how much food on a daily basis KMWA have helped take to the homeless needy people of Medway.

# KMWA Volunteers

Initiated during COVID

During COVID

Post COVID

- **Annual KMWA Co-ordinator's report for the KMWA AGM on 14 th May 2023**
- .Current and Ongoing Activities by KMWA Volunteers:
- 1.Food Distribution- Surplus food is picked up from eight Co Op grocery stores by volunteers. This is then redistributed to facilities across Medway who provide shelter and provisions to the homeless community. The collection of food occurs at two distinct timings, early morning and late evening. All food collected at 9am is delivered to Gillingham Street Angels. The evening collection is delivered to differing homes for the homeless, Endeavour Foyer, Springboard Foyer, Regent House and Amat House. All are located in Medway. In addition, once a week, on a Saturday volunteers take food to the vulnerable and needy in the Sheerness community. The following Co Op stores participate in the programme: Canterbury Street, Parkwood, Hoo, Wainscott, Watling Street, Delce, Walderslade, Dickens Estate. Food is also picked up from one additional source, Tesco Express in Lordswood.
- 2. Additionally, volunteers have worked closely with IMAGO based at 60 Balmoral Rd, Gillingham, Kent as and when their needs arise. This help is sporadic in nature.
- 3. Volunteers work and support MVA (Medway Voluntary Action). Details are not permitted for disclosure due to the sensitive nature of this support and as governed by GDPR.
- 4. Considerable support is provided by volunteers to members of the community. Community members reach out to the KMWA Coordinator for signposting. Help is implemented as necessary .
- 5. KMWA have an excellent partnership with Medway Plus to support Afghan refugees who are supported by Medway Plus at Mid Kent College .Past Endeavours1. Two Health and Wellness Workshops were held in 2022 in the Conservatory. Each of a two hour duration from 2pm to 4pm after Jumaa prayers. The workshops were facilitated by Project Officers from Public Health Directorate of Medway Council, Gun Wharf, Dock Road, Chatham, ME4 4TR . The session on Friday 2nd Dec 2022 also involved personnel from the Healthy Living Section of Medway Council.2. In a collaboration with Medway Plus and Sun pier Gallery a celebration of Islamic Culture & Art was hosted at Sun Pier Art Gallery. From 8th November to 25th November 2022 members of the public enjoyed exhibits from a varied age range of contributors. It proved to be a great success. This bridged the gap between differing communities. Artists from Sittingbourne/ Canterbury also took part. Sun Pier report that the footfall has increased measurably after this event .3. Following on from this very successful event there was a FREE event to Celebrate Kent Muslim Welfare Association Young Volunteers on Saturday 12th November 2022. From 6 p.m to 9 p.m at Sun Pier Riverside Gallery & Café, 2nd Floor, Medway Street, Chatham, ME4 4HF4. In July 2022 there was a 'Bring a Dish 'Dinner. A celebration for young volunteers and their families at Tunbury Village Hall. Certificates were presented and gifts donated by friends and family.5. In March 2022 there was also a 'Bring a dish' party for volunteers to celebrate/network and encourage the efforts of the young.6. A trip to reward the Madrassah children and families took place on Tuesday 9th August, 2022 to Margate and Cranbrook Windmill. This was sponsored by the Test BED FUND Grant 7. A second reward Trip for KMWA Madrassah/ Afghan Refugees, in conjunction with Medway Plus occurred on on Monday, February 13th 2023 to the Victoria and Albert Museum (South Kensington). Again, this was sponsored by the Test Bed Fund Grant. The coach left the Masjid around 9 a.m. and returned at approximately 6 p.m. Maulana Zahoor accompanied the Madrassah pupils on both trips .8. A trip to Cambridge Masjid was organised by Farris Wilson. The visit was paid for by the participants. The community cohesion benefited many.
- Future plans :1. Continue with the collection and drop off of food for the homeless.2.On Monday 22nd May a free trip on the River Medway will take place . NO COST TO KMWA – (Only 12 places on the barge ) .Courtesy of Medway Plus . 3. A trip to the Air Force Museum is planned in June 2023.4. A visit to Kent Wildlife Centre (Summer 2023).5. A trip to the seaside is planned for the KMWA Volunteers and their families.6. A trip to the Houses of Parliament in Oct 2023. During Half Term7. Water sports on the River Medway (courtesy of Medway Plus )
- Please do not hesitate to contact me if any further information is required.
- JazakhaAllah khair
- **Rizwana Shelley KMWA Coordinator**



# Our Community Work Includes:





# Our Community Work Included:





# Our Community work includes





# Our Community work includes



# Our Community work has included



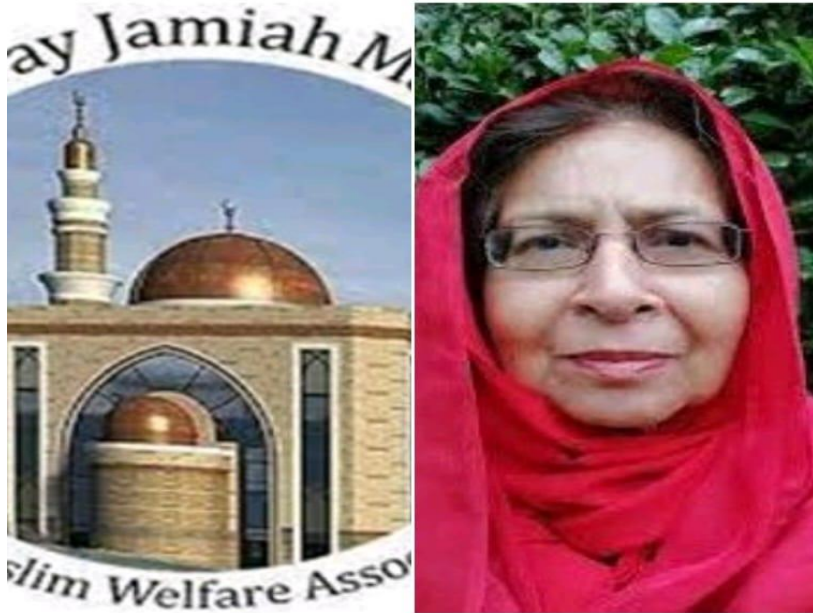


22:27



Medway Voluntary Action • 1st  
A catalyst for social change in Medway  
1d •

We're very pleased to confirm, that one of the runner-ups of this year's Barry Clout award, is Rizwana Shelley from (Kent Muslim Welfare Association). This is the first year we are recognising 2 other volunteers due to the amazing work all of our volunteers do. Congratulations Rizwana.



15

2 comments



Like



Comment



Share



Send



Well deserved...

Love this...

Good l

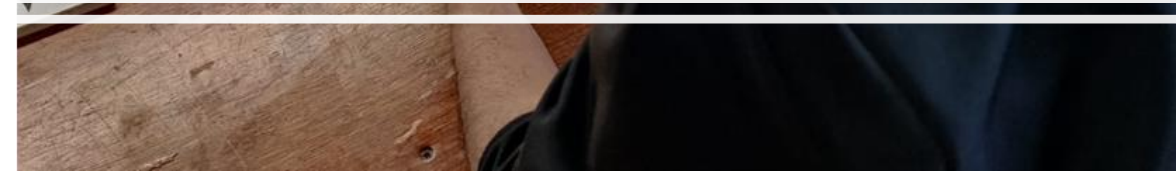
# Our Community work has included







Community activity













# KidsMWA

- Kids@MWA was started in the summer of 2022 to bring exciting and educational activities for children aged 5+ and to bring families into the mosque, which should be seen as more than just a place to pray. It also gives parents the chance to do get involved and help their children and work together as a family. Since then, we have undertaken nature walks in all of the 4 seasons, craft activities (where adults could also participate) such as wood burning, wood turning, smoke art, pebble art, making giant bubbles, making a bird box etc. Activities are held once a month and there are plans to do more throughout the year.
- If anyone has any particular skills, they can contribute and share with the children the please come forward.
- Best regards
- Faheem Anwar



# K@MWA ids

## Smoke Art

Join us for a fun activity and create  
imaginative art using smoke



Open to all ages from 7+  
(due to use of naked flame)  
Adult supervision required for young  
children

All materials will be supplied

**Venue**

Gillingham Masjid (conservatory)  
Canterbury street

**Date**

Sunday 13th November @ 12 pm

For further information please  
contact Faheem on: 07976 852248





# K@MWA

## Nestbox

As we head into spring, wild birds will soon start to build their nest, lay eggs and raise their young.

Let's give Allah's creatures a hand and build a nest box for them, and watch nature in action in your own garden.

Materials are limited so you will need to book for this event.



### Venue

Gillingham Masjid (conservatory)  
Canterbury street

### Date

19th February @ 2pm

contact Faheem to book your  
place: 07976 852248





# K@MWA ids

## Nature Trek #3

قُلْ سِيرُوا فِي الْأَرْضِ فَانظُرُوا كَيْفَ بَدَأَ الْخَلْقَ ثُمَّ اللَّهُ

يُنشِئُ النَّشْأَةَ الْآخِرَةَ إِنَّ اللَّهَ عَلَىٰ كُلِّ شَيْءٍ قَدِيرٌ

Tell them, "Roam the earth and see how He originated creation. Then God will bring into being your second life. God has power over all things.

(Qur'an, 29:20)

Join us on our 3rd nature walk, this time through the Winter season.

Each season brings its own changes in the wildlife, plants and weather for us to ponder over, increase our worldly knowledge and benefit our deen.

Islam is synonymous with Nature and as custodians of this planet we should:

*protect animals, prevent cruelty, provide food, provide refuge and respect all creatures that live with us and around us.*

This is a good opportunity for you to connect with nature and the wildlife and learn about their amazing lives and how the natural world around us changes and the wildlife adapts to each season.

We will be meeting at Motney Hill reserve car park, West Motney Way (off lower Rainham Rd) on Sunday 22nd January 2023 at 2pm.

The trek is open to both adults and children and we will walk 1 mile along the river bank. Bring a pair of binoculars if you have them.

Please wear stout shoes/boots and warm/waterproof clothing in case weather is cold/wet. There is no bad weather, only inappropriate clothing.

If anyone has any medial conditions please inform the organiser.

For further details contact:

Faheem - 07976 852248





# K@MWA BUBBLES

Discover the fascinating and fun  
world of Bubbles



Create bubbles within bubbles, square  
bubbles, long bubbles, large bubbles  
and stand inside a bubble

**Venue**

Gillingham Masjid  
Canterbury street

**Date**

25th September @ 2pm

For further information please  
contact Faheem on: 07976 852248

## Competition

Win a prize for the most  
bubbles within a bubble,  
within a bubble...

# K@MWA



**LOWER GRANGE FARM**




Attend a day of activities, adventure and skills with your Troop or Unit at Lower Grange Farm.



**CONNECT 22**

£5/YP  
10:00-17:00  
23<sup>RD</sup> JULY

**SCOUTS & EXPLORERS ADVENTURE DAY**

Sign up through our website

LowerGrangeFarm.co.uk  
@lowergrangefarm  
Kent Scouts Activity Centre, Lower Grange Farm,  
Grange Lane, Sandling, Maidstone, Kent ME14 3DA  
01622 766840







Supported by  
**RECONNECT**  
Kent Children and Young People

This is a Gillingham Scout event and I have arranged for the youth in the community to attend. It's a golden opportunity to try many new fun and adventurous activities.

Age limit is strictly 10 yrs - 18 yrs and is open to girls and boys. If you are interested please register with me so I can coordinate numbers (you will not be able to register on the website as you have to be a scout member).

For further information please contact Faheem on: 07976 852248



# KMWA Dawah

Br Farris Wilson





- **The KMWA Dawah Stall Report : Bismillah**

- Alhamdulillah by the permission of Allah سبحانه وتعالى and His acceptance we have successfully engaged with our Dawah stall initiative under the KMWA umbrella and accompanied by our various other partners.
- The stall has already accomplished much on our amazing journey of Dawah and volunteers work in our local community. It all began fairly recently - within the last year. It was established as a result of a concern from myself (brother Farris) and auntie Rizwana on the KMWA volunteers WhatsApp group about how we could be a presence at the grand opening of the Gillingham Street Angels Charity Shop in Chatham - grand opening day. That's where Neil the CEO of the charity suggested we should come along and be that presence and representation of KMWA volunteers and Dawah outreach initiatives.
- It should be mentioned that the street angels charity are an amazing community, not even religious based or focused and yet their staff are so welcoming and accommodating every time.
- Since then we have been regularly attending their shop with the stall and it's still ongoing In Sha Allah. From this Dawah stall initiative we have had an increase in volunteers and even a new Muslim sister entering the fold of Islam. Every week we are on the stall the Qurans are nearly all taken. It has been a huge success and we are expanding further by even seeing us now getting permission to setup in the Mall in Maidstone. There we have invited IERA down and other experienced personalities in the work of Dawah that have offered us support and training and is still ongoing In Sha Allah.
- Finally it should be said that the KMWA organisation has been very supportive and to hand at every point, especially in the initial stages. Brother Rizwan has been a fantastic supporter and has been readily available for the stall requirements throughout. We hope this relationship and our efforts for this noble work continues to grow and get stronger. We hope more volunteers - both brothers and sisters can help in anyway to support and benefit immensely - even if it's just your Duas - please let's not stop now. May Allah سبحانه وتعالى reward, bless and accept from us all, Aameen





## Dawah & Volunteers' Stall



Volunteer to support  
KMWA Dawah stall  
Sat 4th Feb 2023  
9 am to 4 pm  
127 High Street  
Chatham



Dawah is the best of deeds  
so come and join our  
efforts and gain abundant  
rewards!

**Amazing**

"By Allah, that Allah guides a man through you is  
better for you than a herd of expensive red camels"

**Sahih-al Bukhari**

Please support this noble cause!

Gillingham Street Angels Charity Shop

125-127 High Street, Chatham, ME4 4DH

**KMWA**

## Dawah & Volunteers' stall

**SATURDAY 31ST DEC 2022**

Please come and support the stall. All  
welcome.

**9AM to 4PM**

125-127 High Street, Chatham,  
ME4 4DH

# KMWA sisters

Meet in the Masjid every Wednesday



# Sisters report

---

follow the link

<https://1drv.ms/w/s!Anq3xuzzy0Insga98zVsw-Lc9fjA-LA>

Or see the accompanying  
seperate report.





## Summer Workshops

FREE Interactive sessions for parent and child (Parent must attend sessions with child)

For boys and girls

Age: 3 - 7 years old

Time: 10 am to 12pm

✓ My Prayer Workshop  
Thursday 4th August

✓ My Daily Duas Workshop  
Thursday 11th August

✓ Mohammed PBUH &  
His Companions  
Thursday 18th August

✓ Islamic Manners Workshop  
Thursday 28th August

Delivered by Ustadha Fethia Zrari

Kent Muslim Welfare Association, KMWA Sisters  
114 Canterbury Street, Gillingham, ME7 5UH  
Tel: 07872 029111



بِسْمِ اللَّهِ  
الرَّحْمَنِ الرَّحِيمِ

# KMWA SISTERS' PICNIC IN THE PARK



SUNDAY 29TH MAY 2022 @1.30PM ONWARDS  
FOR SISTERS AND CHILDREN  
PLEASE BRING A PICNIC BLANKET AND SOME FOOD TO SHARE  
MEET NEAR CAFE@1.30PM

CAPSTONE FARM COUNTRY PARK  
CAPSTONE ROAD  
CHATHAM  
ME7 3JG

## Sisters Coffee Morning



Wednesday 25th January  
2023

1030am-12pm

Children welcome!

Come along and share the  
event with friends!

Gillingham Masjid,  
114 Canterbury Street,  
Gillingham ME7 5UH



# KMWA Sisters' Halaqah Wednesday 10.30am-11.30am

Gillingham Mosque 114 Canterbury Street, ME7 5UH



The Prophet (ﷺ) said, "The best among you (Muslims) are those who learn the Qur'an and teach it."



## Events:

- ✓ Wednesday Halqa
- ✓ Tajweed Classes
- ✓ Mother & Toddler Sessions
- ✓ Coffee Mornings
- ✓ Educational Workshops



Kent Muslim Welfare Association, KMWA Sisters  
114 Canterbury Street, Gillingham, ME7 5UH  
Tel: 07872 029111



Youth Hubb

Weekly Youth HuBB 14 - 25 Yea...

www.eventbrite.com

## Youth Hubb @ KMWA 🕌

**Age:** 14 - 25

**Venue:** KMWA, Jamia Masjid  
Gillingham, 114 Canterbury Street,  
Gillingham, Kent. ME7 5UH.

**Day:** Every Saturday

**Time:** 6:30pm - 8:30pm

Starting on Saturday 22nd  
October.

Bonding over activities

👥, games 🎱, discussions

🗣️ and food 🍕 in a good  
environment

To attend a session, please  
register your attendance using the  
link:

<https://www.eventbrite.co.uk/e/youth-hubb-tickets-409504538097>

# Youth Hubb Activities

The Youth Hubb at Gillingham Mosque runs from 6:30 till about 9pm every Saturday. We focus on youths from about 15 years old to 25-year-olds. We find that this age range are the most neglected but yet most impressionable. As once they leave madrassa, their connection to the mosque reduces drastically, and so can drift to where their environment takes them. Our aims of the Youth Hubb is to instil

- Brotherhood
- love for the mosque
- Discipline
- A positive experience to attach their hearts to the mosque.
- An Islamic environment
- A support structure as they transition from young adult to maturity.

We have been doing this through short Islamic reminders by Imam Irfan, we have 3 a side football, table tennis, boxing training from experienced trainers, interactive games and at the end of the evening we sit down and eat pizza together, and a special treat once a month we have some amazing home cooked food.

I encourage everyone with sons from 15 to 25 to spend more time with Muslims of their age.





## Youth Hubb

Weekly Youth HuBB 14 - 25 Yea...  
[www.eventbrite.com](http://www.eventbrite.com)

### Youth Hubb @ KMWA 🕌

**Age:** 14 - 25

**Venue:** KMWA, Jamia Masjid  
Gillingham, 114 Canterbury Street,  
Gillingham, Kent. ME7 5UH.

**Day:** Every Saturday

**Time:** 6:30pm - 8:30pm  
Starting on Saturday 22nd  
October.

Bonding over activities  
🧑🏻‍🎮, games 🔍, discussions  
💬 and food 🍕 in a good  
environment

To attend a session, please  
register your attendance using the  
link:

<https://www.eventbrite.co.uk/e/youth-hubb-tickets-409504538097>







KMWA  
Health

Health  
checks,  
vaccinations,  
information.



# Spiritual Gatherings

بِسْمِ اللَّهِ الرَّحْمَنِ الرَّحِيمِ

IN THE AUSPICIOUS COMPANY OF

Sheikh ul Hadith and Sheikh ul Tafseer دَامَتْ بَرَكَاتُهُمْ  
Hazrat Maulana Jaleel Ahmad Akhoon Saheb


Khalifa (disciple) of رَحِمَهُ اللَّهُ عَلَيْهِ  
Hazrat Maulana Hakeem Muhammad Akhtar Saheb

*Islahi Bayaan*

AN URDU EVENT

SATURDAY 8TH OCTOBER | AFTER ISHA PRAYER - 8.30pm  
OPEN FOR BROTHERS AND SISTERS  
**LIGHT REFRESHMENTS WILL BE SERVED**

Jamia Masjid Gillingham | Kent  
114 Canterbury St, Gillingham ME7 5UH



**My Companions  
Are Like Shining Stars**

.....

**Talk about the virtues of the Companions and the  
most recent film "Lady of Heaven"**

**Talk delivered by - Shaykh Muhammad Yasir Al - Hanafi**

————— ❦ —————

**Venue - Jami'ah Masjid Gillingham. ME7 5UH**

**Time - 13.30 - After Zuhr**

**Date - Sunday 11 September 2022**

Event is for both brothers & sisters

————— ❦ —————

**Refreshments will be served following the programme**

DECEMBER

South London Tour

# PROTECTING YOUR CHILDREN

Understanding your rights and responsibilities  
as parents on RSE and LGBTQ

## LEWISHAM

Saturday 24th  
After Dhur 12:15pm  
Lewisham Masjid  
SE13 6RA

## CROYDON

Saturday 24th  
After Magreb 3:55pm  
Al-Hidaya Mosque  
CR7 7JP

## NORBURY

Sunday 25th  
After Dhur 12:30pm  
Bismillah Masjid  
SW16 4DE

## PENGE

Sunday 25th  
After Magreb 3:55pm  
Penge Mosque  
SE20 7DS

## TOOTING

Monday 26th  
After Dhur 1:00pm  
Tooting Islamic Centre  
SW17 7TJ

## PURLEY

Monday 26th  
After Esha 7:30pm  
Purley Masjid  
CR8 4EX

## BROMLEY

Tuesday 27th  
After Dhur 1:30pm  
Al-Emaan Centre  
BR2 8HF

## GILLINGHAM

Tuesday 27th  
After Magreb 3:55pm  
Gillingham Mosque  
ME7 5UH



Ustadh  
Yusuf Patel

FOUNDER OF SRE ISLAMIC





## Social Events



A vibrant poster for the Medway Eid Funday 2022 event. The background is light green with black line art of trees at the top. The title 'MEDWAY EID FUNDAY 2022' is in large, bold, pink and blue letters. Below it, the text '...we are back!' is in red. The date and time 'SATURDAY 23RD JULY 3.30PM TO 7.30PM' and the location 'RAINHAM SCHOOL FOR GIRLS, DERWENT WAY, GILLINGHAM, ME8 0BX' are in black. A central sun-like graphic contains the text 'Kent's Biggest Eid Event!'. To the left, there are illustrations of a burger, a drink, and a dessert. To the right, a list of activities is shown in various colors: 'BARBECUE' (red), 'INFLATABLES' (purple), 'HENNA' (blue), 'FOOD STALLS' (yellow), 'JEWELLERY' (orange), and 'ASIAN CLOTHING' (purple). At the bottom, there are colorful flowers and circles. The contact information 'ENQUIRIES 07840065558' is at the bottom left.

**MEDWAY EID  
FUNDAY 2022**

*...we are back!*

**SATURDAY 23RD JULY 3.30PM TO 7.30PM**  
**RAINHAM SCHOOL FOR GIRLS**  
**DERWENT WAY**  
**GILLINGHAM**  
**ME8 0BX**

**Kent's  
Biggest  
Eid Event!**

**BARBECUE**  
**INFLATABLES**  
**HENNA**  
**FOOD STALLS**  
**JEWELLERY**  
**ASIAN CLOTHING**

**ENQUIRIES**  
**07840065558**

# School visits, Scouts visits, Visiting Schools





# School visits, Scouts visits, Visiting Schools



**FOLLOW THE LINK:**

[HTTPS://1DRV.MS/B/S!ANQ3XUZ  
YOINSGBAAEYI9BNFHIGQPOA](https://1drv.ms/b/s!ANQ3XUZYOINSGBAAEYI9BNFHIGQPOA)



**OR SEE SEPARATE  
REPORT.**







# Visit My Mosque



## MOSQUE OPEN DAY

**MCB** MUSLIM COUNCIL OF BRITAIN

**WE INVITE PEOPLE OF ALL FAITHS, NO FAITHS AND TRADITIONS TO COME ALONG AND VISIT OUR MOSQUE TO LEARN ABOUT ISLAM AND HELP BUILD BRIDGES BETWEEN OUR COMMUNITIES**

**KMWA**  
KENT MUSLIM WELFARE ASSOCIATION

**MOSQUE TOUR**

**FREE HENNA**

**EXHIBITION, TALKS, Q&A**

**LIVE MUSLIM PRAYER**

**MEET NEW PEOPLE**

**FREE SNACKS / REFRESHMENTS**

**SUNDAY**

**4th SEPTEMBER 2022**

**12 Noon - 4.00PM**



**DRESS CODE**

The Kent Muslim Welfare Association (KMWA) welcomes visitors from all backgrounds and are kindly asked to observe the following dress code:

- Shoes must be taken off at the point of entry
- Users and visitors are asked to dress modestly.
- Avoid see-through, revealing or low-cut clothing.
- Shorts are not allowed. Skirts and dresses should reach below the knees.

**KENT MUSLIM WELFARE ASSOCIATION**

**114 CANTERBURY STREET**

**GILLINGHAM, KENT**

**ME7 5UH**

**TEL: 01634 850878**

**WEB: [www.kmwa.org.uk](http://www.kmwa.org.uk)**





# Taste Ramadaan 2023







UNIVERSITIES  
*at* MEDWAY



**Kent  
Police**



**AMBULANCE SERVICE**  
**(843) 407-6488**







**IPAG & MIFA**

# Do we have a vision?

Improving engagement with the community- a surgery every 2 months whereby members of the community can get information regarding KMWA activities, advice and help.

To continue to expand the services provided e.g. KMWAhealth can add health advice, vaccination programs, health checks and blood donation.

To improve information – for example; advance information regarding Salaat ul Jummah should be given as to who is giving the Bayaan and in what language (with or without translation).

Improving the membership system to simplify it and clarify it for the public. Make it easier to join and renew membership with a link to renew.



# Do we have a vision?

Investment in our staff for the benefit of the community. For example, work with Imam to improve spoken English for improved communication with the increasingly diverse community.

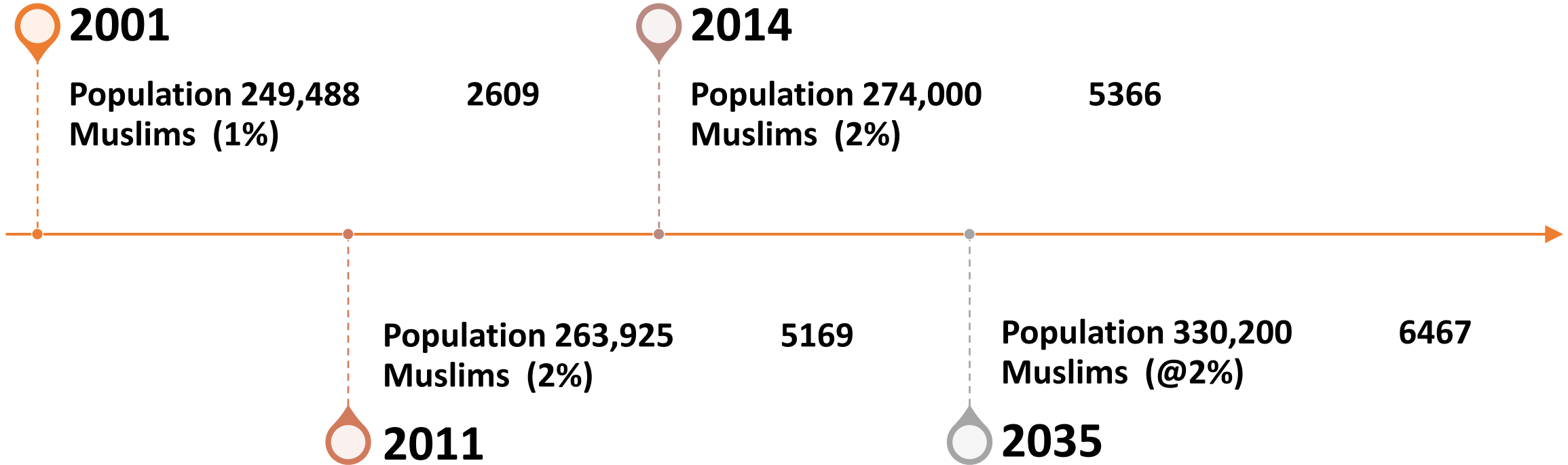
Focus on how we may improve the Madrassa for the benefit of the children.

Incorporate training for our Trustees and improve individual accountability with portfolio responsibilities.

Improve the flow of information within the Trustees and across the community.

Establish performance reviews & succession planning.

# Growth & Predicted Growth of the Muslims    Population in Medway





Overhead drone video shows narrow building with lack of space surrounded by houses, railway and roads.



# The vision and the plan

**We have designed a purpose built community centre and Masjid with facilities for now and for our future community.**



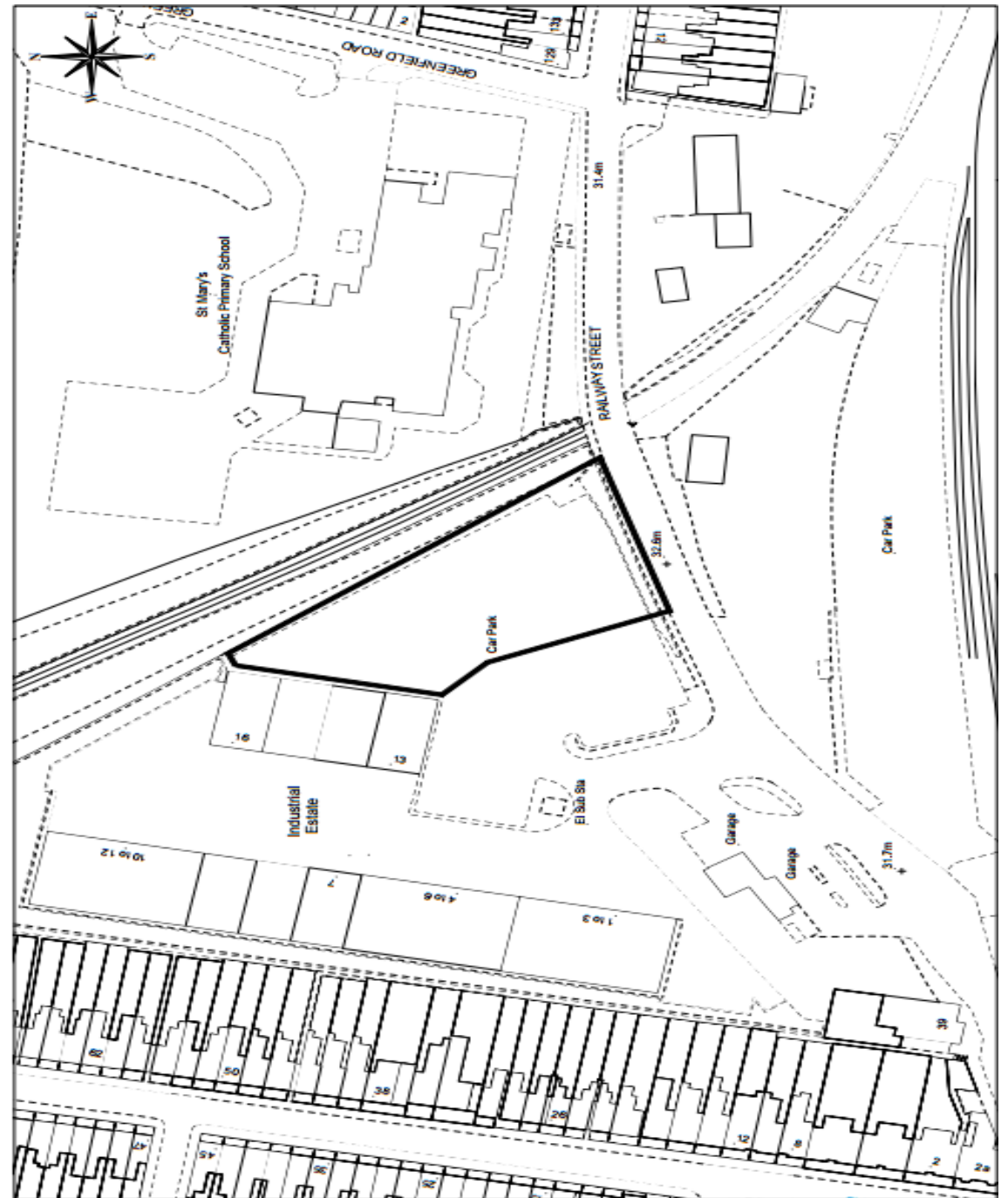


# Benefits to the Community

- Prayer space
- Wudu facilities
- Classrooms and teaching facilities
- Function hall – with kitchen facilities for Nikkah, Walimas, Conferences
- Janazah facility
- Library
- Nursery
- Retail space
- Halal café
- Offices for administration
- Reception for enquiries

**What we are doing –  
working towards the  
solution.**

- We have worked hard over the years to resolve these problems with our local council to acquire and pay for land for a new purpose built Masjid and Islamic community centre.







How it will look on Railway Street.





**The story so far in words and pictures....**

**We have fully paid for a site nearby the existing Masjid which is 0.65 acres. The land cost was £450,000.00 (negotiated down from £520,000). To get to the planning permission stage, our total costs amounted to around £750,000.00.**



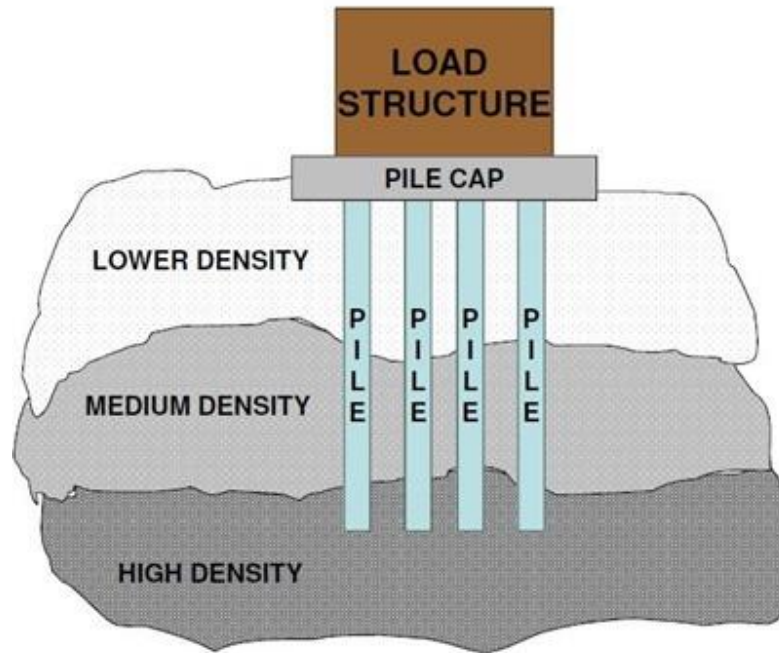


# Construction begins

- Planning permission for the Centre in July 2014.
- Fully disposed of the planning permission conditions in April 2017.
- After fencing off and making the access roads and bringing in utilities, we started development of the site in May 2017.
- This started with the construction of the Mortuary.

**Construction summary  
Pilings & foundations:  
£120,000.00**

**Completed by Ross Miller in  
September 2017**





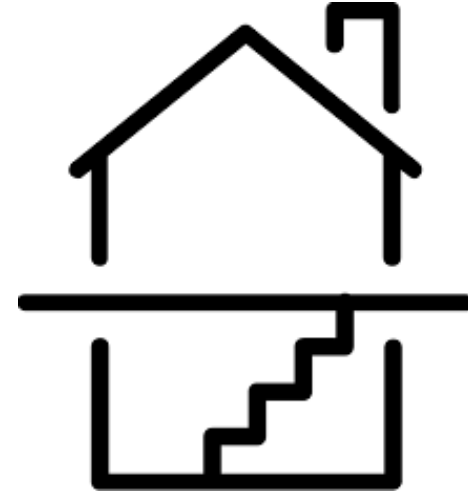
126 steel &  
concrete piles  
placed into the  
ground as part of  
the foundations  
to support the  
building between  
July – September  
2017.





**BASEMENT EXCAVATION,  
BASEMENT FLOOR SLAB AND  
WALLS AND SUPPORTING  
PILLARS INCLUDING  
WATERPROOFING AND  
FINISHING FOUNDATIONS**  
**Cost: £550,000.00**

**COMPLETED IN JUNE 2018 by  
Cheema Construction Group**







**Basement  
excavation &  
structural work  
started November  
2017**



# Basement work completed June 2018

## Flyover Video:





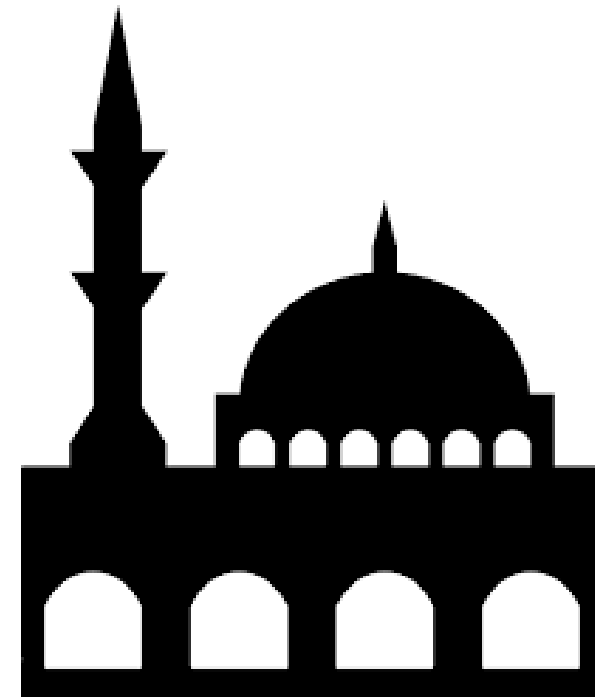
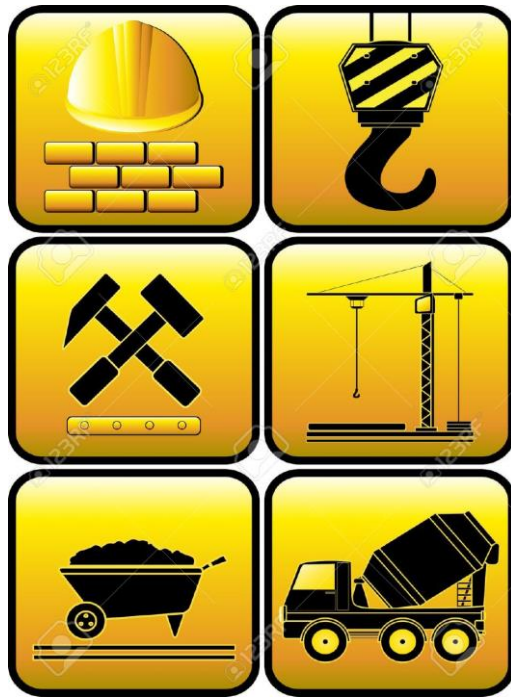
# Overview of current site with completed Basement structure

---



# Next Phase of Construction Summer 2018

- GROUND FLOOR SLAB & STARICASES TO THE GROUND FLOOR
- This work completed in August 2019 at a cost of £450,000.00.







The  
basement  
level has  
been  
covered by  
the  
ground floor  
slab.



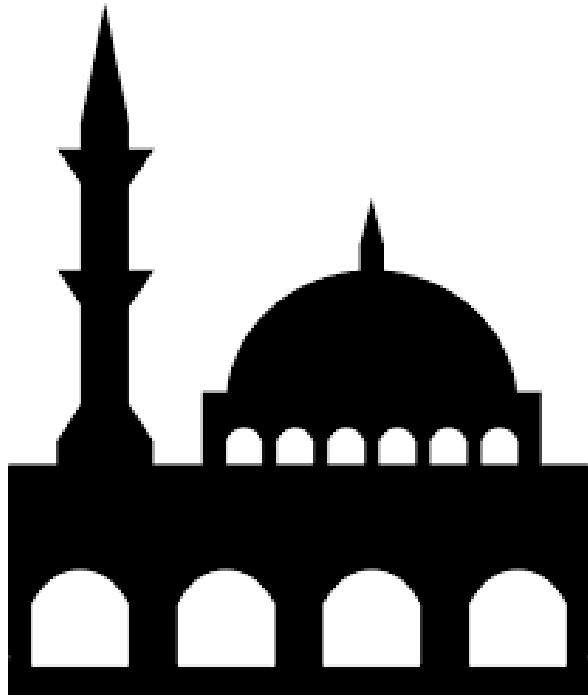


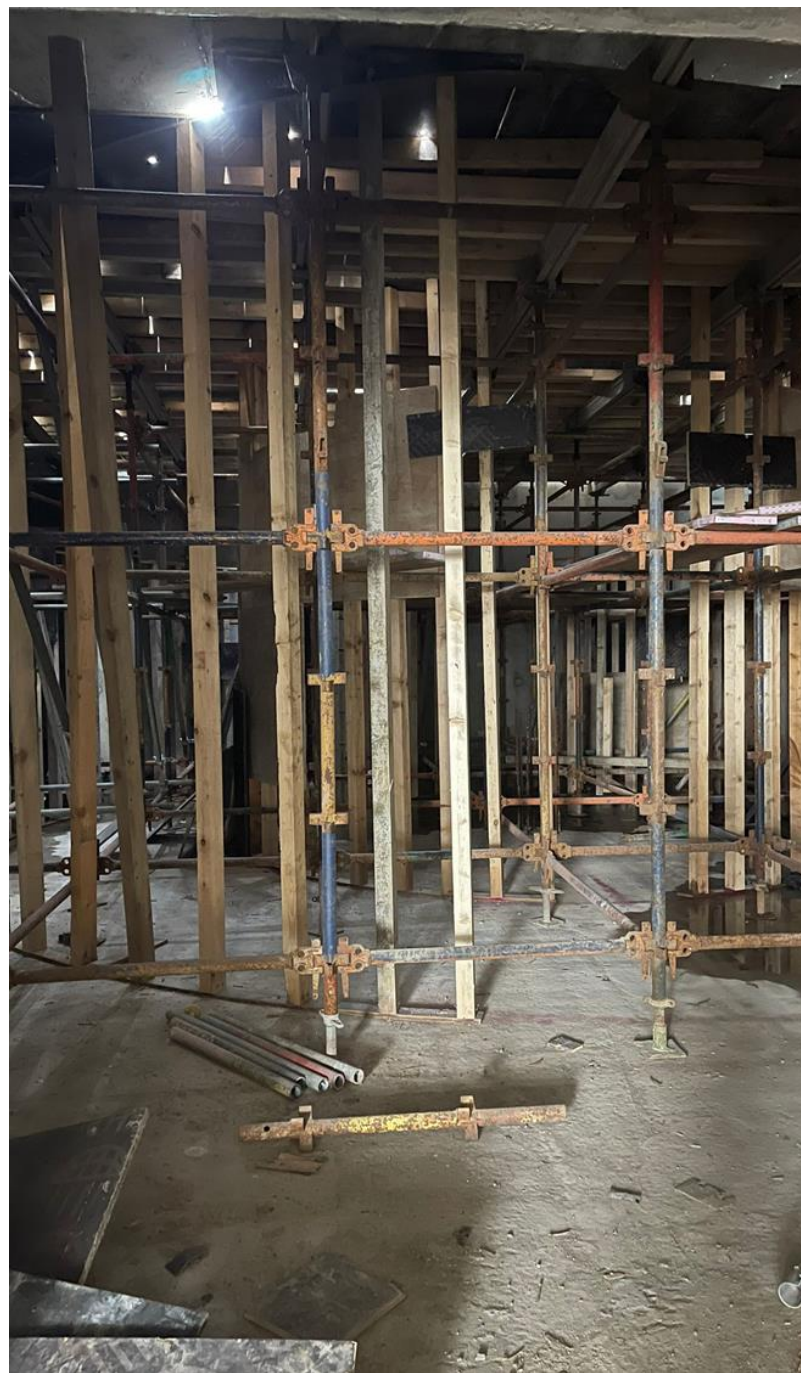
# Ground floor slab and Basement

---

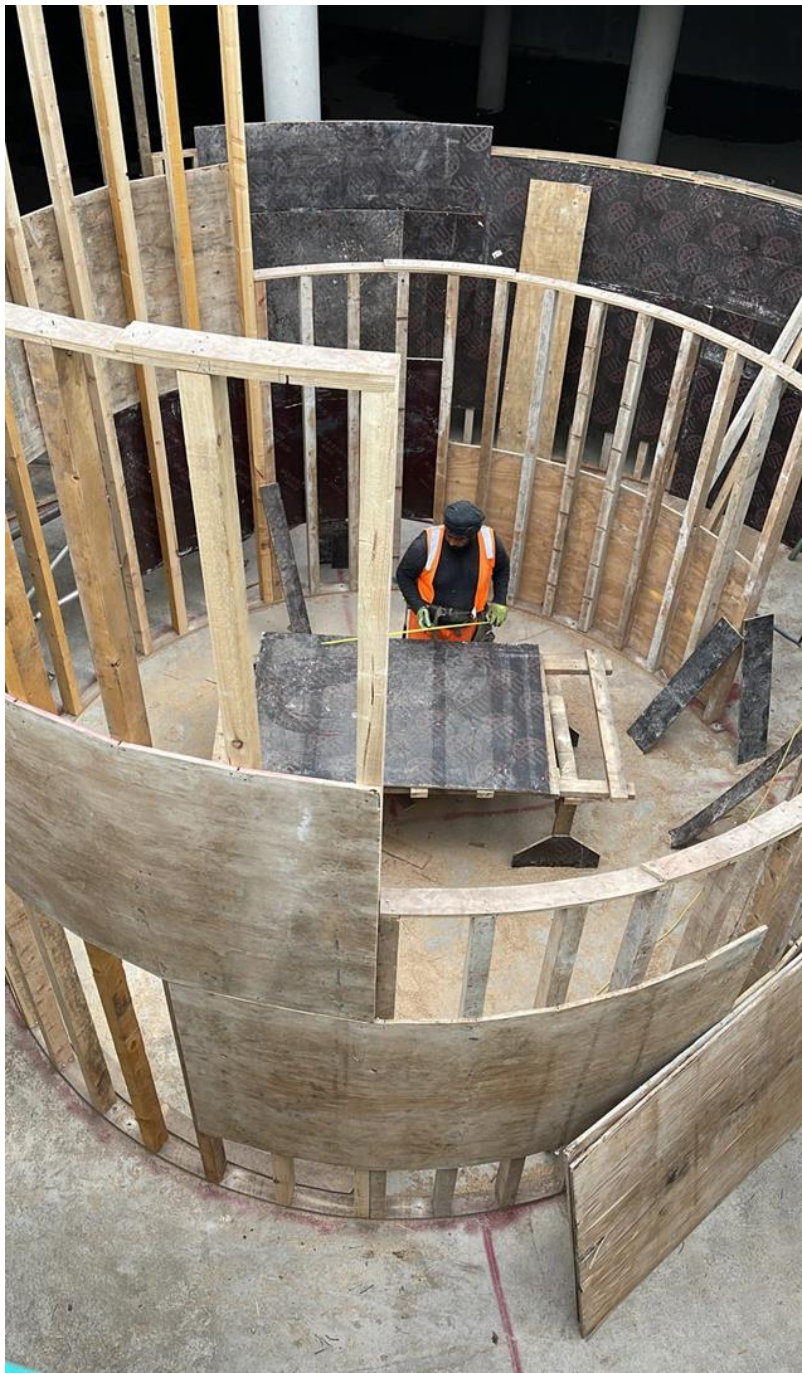


**Current Stage – to build the shell of the building -  
started September 2022 – Cost £1.6 million**











































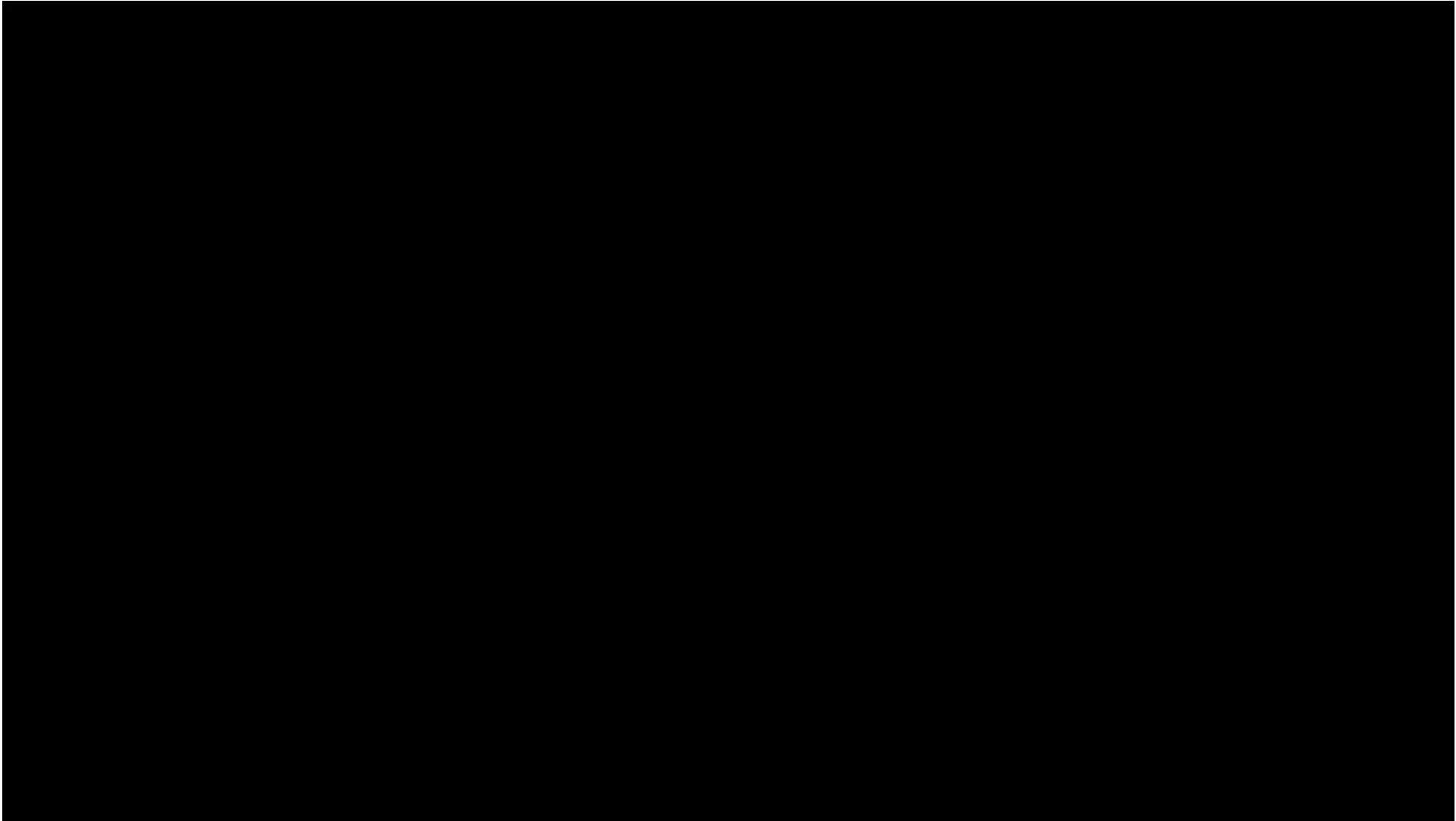




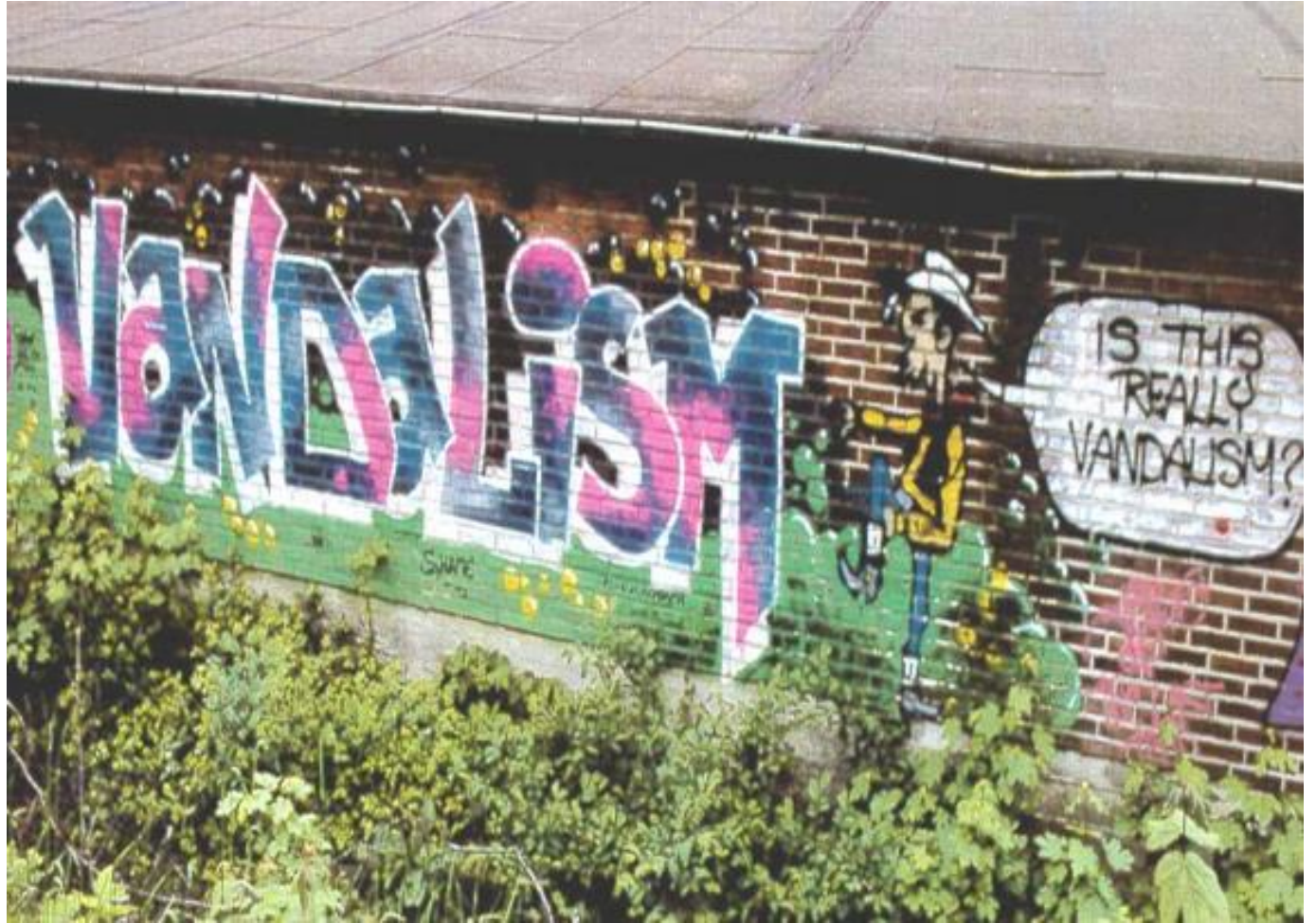
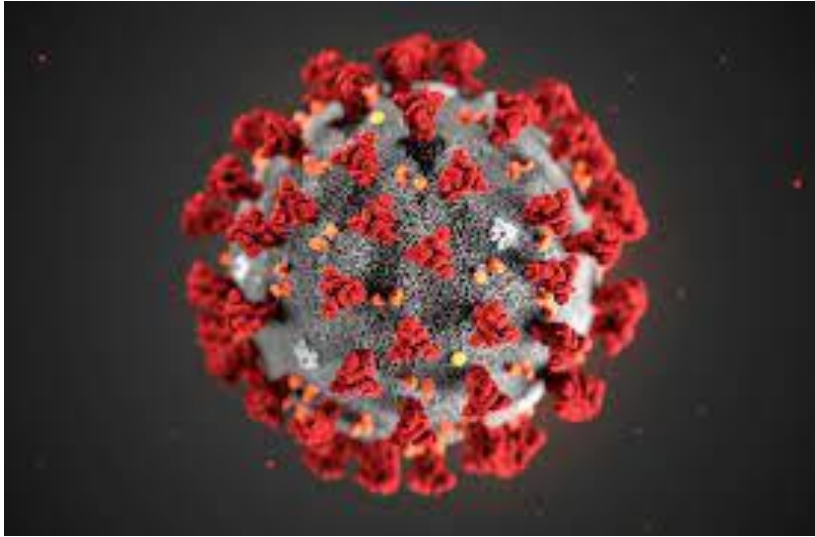




# Take a virtual tour through the New Masjid







# Challenges



# How Much do we need?

---

**We have raised over the years in total over £2 million.**

---

**We still require at least £4 million.**

---

**Our next phase to build the framework, floors and roof is costing £1.6 million.**

---

**To add the windows and make water-tight approximately £0.8 million.**

---

**We have approximately £300,000.00 in our account at present.**



# How we have raised money so far?

---

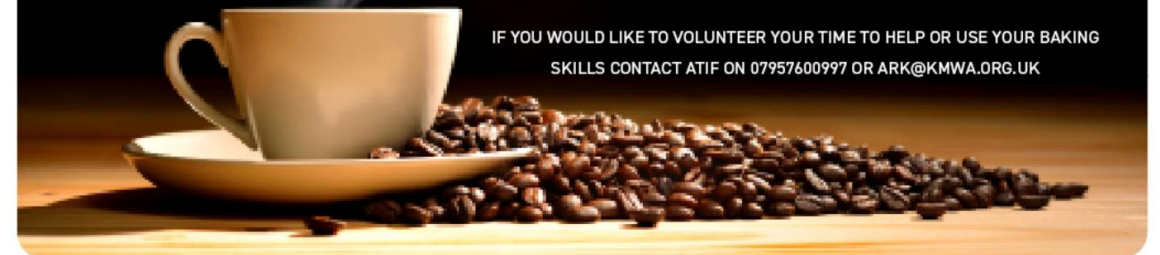


## CHAI / COFFEE MORNING FUNDRAISER THURSDAY 23RD DECEMBER

ARK PROJECT WITH KMWA IS ARRANGING  
AN INFORMAL CHAI MORNING  
REASONABLY PRICED SNACKS AND TEA

TIME: 9.30AM -12.30PM  
LOCATION: ST MARYS ISLAND COMMUNITY CENTRE  
ST MARY'S ISLAND  
CHATHAM  
ME4 3EP

IF YOU WOULD LIKE TO VOLUNTEER YOUR TIME TO HELP OR USE YOUR BAKING  
SKILLS CONTACT ATIF ON 07957600997 OR [ARK@KMWA.ORG.UK](mailto:ARK@KMWA.ORG.UK)







**How we have raised money so far?**



# How Do We Obtain Larger Funds??

---

**Through Overseas Charitable Organisations.**

---

**Through Philanthropic Individuals both at home and overseas.**

---

**Through Businesses.**

---

**It is difficult to approach any organisation, embassy or overseas country.**

---

**We lack contacts and connections.**

---

**The methodology is not clear.**

# FUNDRAISING

- **Community** is the key.
- In order to raise funds, we have to **engage with the Community**.
- We have to **listen to the Community**.
- We have to **serve the Community**.
- We have to put time and effort into the Community.
- We should not expect immediate results.





